

A Basin-wide Approach to Building Resilient Livelihoods

60% of southern Africans rely on rain-fed subsistence agriculture

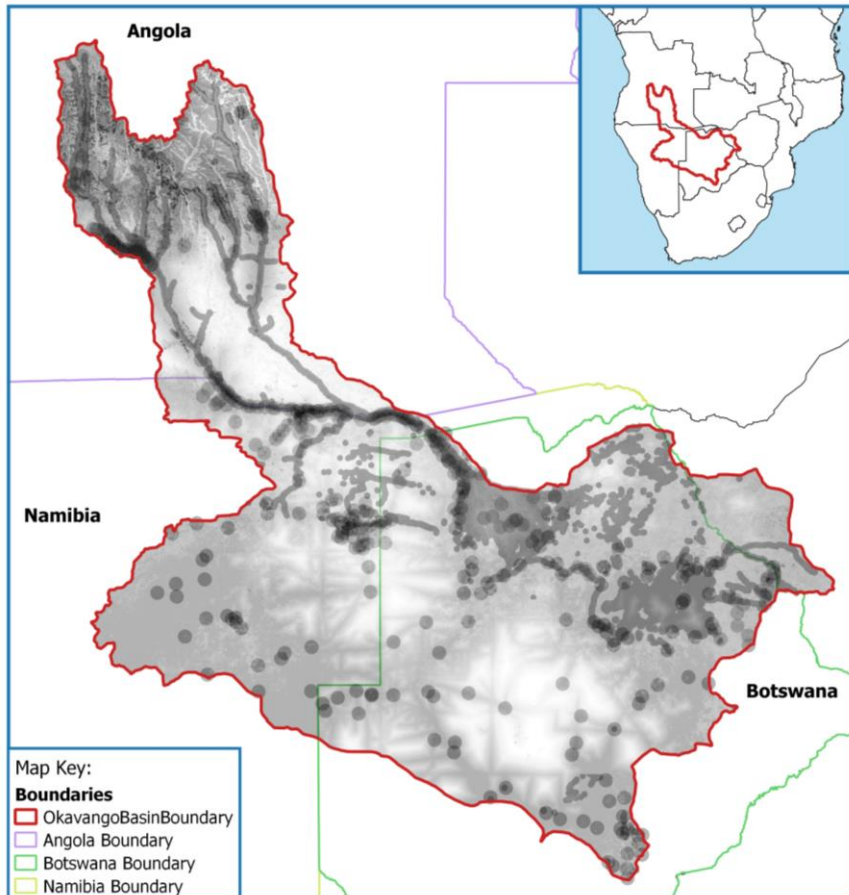


Climate change

Unsustainable use of the region's natural resources as a means of survival

Interventions supporting **livelihoods**, increasing **resilience** and **reducing poverty** at scale

Basin-wide inclusive, sustainable socio-economic development



Adopting a dual top-down (data & **hotspot mapping**) bottom-up (**stakeholder validated**) approach to:

- identify
- conceptualise; and
- develop appropriate livelihood responses to address localised challenges in river basins



Clustering individual project concepts into **portfolios of livelihood interventions**



Building the capacity of River Basin Organisations and implementing partners to develop **bankable project concept notes** tailored to donor interests

Creating the scale of investment necessary to **attract donor funding**